

Throttling Device Catalog

- ❖ ORIFICE
- ❖ V-Cone
- ❖ NOZZLE
- ❖ VENTURI TUBE
- ❖ WEDGE METER



ORIFICE

Orifice Plate



- Features : Low cost of installation & maintenance
- Turndown Range : 4:1
- Material: STS304, STS316, Inconel, Monel, Hastelloy, Teflon
- Mounting : Flange 150#, 300#, 600#, 900#
- Installation : 2B~92B(50A~2300A) Pipe & Duct
- Accuracy : $\pm 1.5\%$

Orifice Plate & Flange



- Features : Low cost of installation & maintenance
- Turndown Range : 4:1
- Material :
 - Plate : STS304, STS316, Inconel, Monel, Hastelloy, Teflon
 - Flange-C.S, STS304, STS316, Inconel, Monel, Hastelloy, A182 F11, F22, F51
- Mounting : Flange 300#, 600#, 900#
- Installation : 2B~24B(50A~600A) Pipe & Duct
- Accuracy : $\pm 1.5\%$

Ring Type Orifice



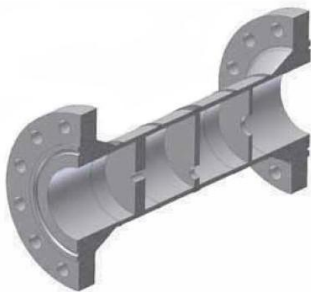
- Features : Low cost of installation & maintenance, Corner-tab type
- Turndown Range : 4:1
- Material :
 - Plate : STS304, STS316, Inconel, Monel, Hastelloy, Teflon
 - Ring-C.S, STS304, STS316, Inconel, Monel, Hastelloy, Teflon
- Mounting : Flange 150#, 300#
- Installation : 2B~36B(50A~900A) Pipe & Duct
- Accuracy : $\pm 1.5\%$

Balancing Orifice



- Features : Decompression single hole plate
- Material : STS304, STS316, Inconel, Monel, Hastelloy, Teflon
- Mounting : Flange 150#, 300#, 600#, 900#, 1500#, 2500#
- Installation : 1/2B~36B(15A~900A) Pipe

Multi Hole Orifice



- Features : Multi hole plate to solve lengthening recovery zone using decompression single hole plate
- Material : STS304, STS316, Inconel, Monel, Hastelloy
- Mounting : Flange 150#, 300#, 600#, 900#, 1500#, 2500#
- Installation : 1/2B~36B(15A~900A) Pipe

High Pressure Orifice



- Features : For High pressure
- Turndown Range : 4:1
- Material :
 - Plate : STS304, STS316, Inconel, Monel, Hastelloy
 - Flange-C.S, STS304, STS316, Inconel, Monel, Hastelloy, A182 F11,F22,F51
- Mounting : Flange 900#, 1500#, 2500#
- Installation : 2B~24B(50A~600A) Pipe
- Accuracy : $\pm 1.5\%$

Integrate Orifice



- Features : Transmitter, Block All-in-one type
- Turndown Range : 4:1
- Material : STS304, STS316, Inconel, Monel, Hastelloy
- Mounting : Flange 150#, 300#, 600#, 900#, 1500#
- Installation : 1/2B~8B(15A~200A) Pipe
- Accuracy : $\pm 1.5\%$

V-Cone

V-Cone



- Features: Unnecessary direct-connecting-pipe & low pressure loss
- Turndown Range : 10:1
- Material : Cone- STS304, STS316, Inconel, Monel, Hastelloy
Body-C.S, STS304, STS316, Inconel, Monel, Hastelloy
- Mounting : Flange 150#, 300#, 600#
- Installation : 1/2B~72B Pipe & Duct
- Accuracy : $\pm 0.5\%$ (Calibration)

Insertion V-Cone



- Features : Unnecessary direct-connecting-pipe & low pressure loss
- Turndown Range : 10:1
- Material : Cone- STS304, STS316, Inconel, Monel, Hastelloy
Body-C.S, STS304, STS316, Inconel, Monel, Hastelloy
- Mounting Connection : Pipe side
- Installation : 20B~72B Pipe & Duct
- Accuracy : $\pm 0.5\%$ (Calibration)

NOZZLE

Flow Nozzle



- Features : Butt welding mounting type
- Turndown Range : 6:1
- Material : Carbon Steel, STS304, STS316, Inconel, Monel, Hastelloy
- Mounting : Butt Weld
- Installation : 2B~24B(50A~600A) Pipe
- Accuracy : $\pm 2.0\%$

Holding Ring Nozzle



- Features : Holding ring mounting type
- Turndown Range : 6:1
- Material : Carbon Steel, STS304, STS316, Inconel, Monel, Hastelloy
- Mounting : Butt Weld
- Installation : 2B~24B(50A~600A) Pipe
- Accuracy : $\pm 2.0\%$

Flange Mounting Nozzle



- Features : Flange mounting type
- Turndown Range : 6:1
- Material : Carbon Steel, STS304, STS316, Inconel, Monel, Hastelloy
- Mounting : Flange 150#, 300#, 600#, 900#, 1500#, 2500#
- Installation : 2B~24B(50A~600A) Pipe
- Accuracy : $\pm 2.0\%$

VENTURI TUBE

Flange Mounting Venturi Tube



- Features : Welding sheet plate type
- Turndown Range : 6:1
- Material : Carbon Steel, STS304, STS316, Inconel, Monel, Hastelloy
- Mounting : Flange 150#, 300#
- Installation : More 4B (More 100A) Pipe & Duct
- Accuracy : $\pm 2.0\%$

Welding Mounting Venturi Tube



- Features : Welding sheet plate type Welding mounting type
- Turndown Range : 6:1
- Material : Carbon Steel, STS304, STS316, Inconel, Monel, Hastelloy
- Mounting : Flange 150#, 300#
- Installation : More 4B (More 100A) Pipe & Duct
- Accuracy : $\pm 2.0\%$

Machinery Processing Venturi Tube



- Features : Machinery processing type, Flange mounting type
- Turndown Range : 6:1
- Material : Carbon Steel, STS304, STS316, Inconel, Monel, Hastelloy
- Mounting : Flange 150#, 300#, 600#, 900#, 1500#, 2500#
- Installation : 2B~14B(50A~300A) Pipe
- Accuracy : $\pm 1.0\%$

WEDGE METER

Wedge Meter



- Features : Suitable for high viscosity & included sludge liquid remote Seal Type D/P Transmitter
- Turndown Range : 6:1
- Material : Carbon Steel, STS304, STS316, Inconel, Monel, Hastelloy, Tungsten carbide coating
- Mounting : Flange 150#, 300#, 600#, 900#, 1500#
- Installation : 2B~24B(50A~600A) Pipe
- Accuracy : $\pm 2.0\%$ Calibration $\pm 0.5\%$